

2022-2023 New Products

Progressive Mixer



Nero





Nero Tapware Reinvent your bathing experience

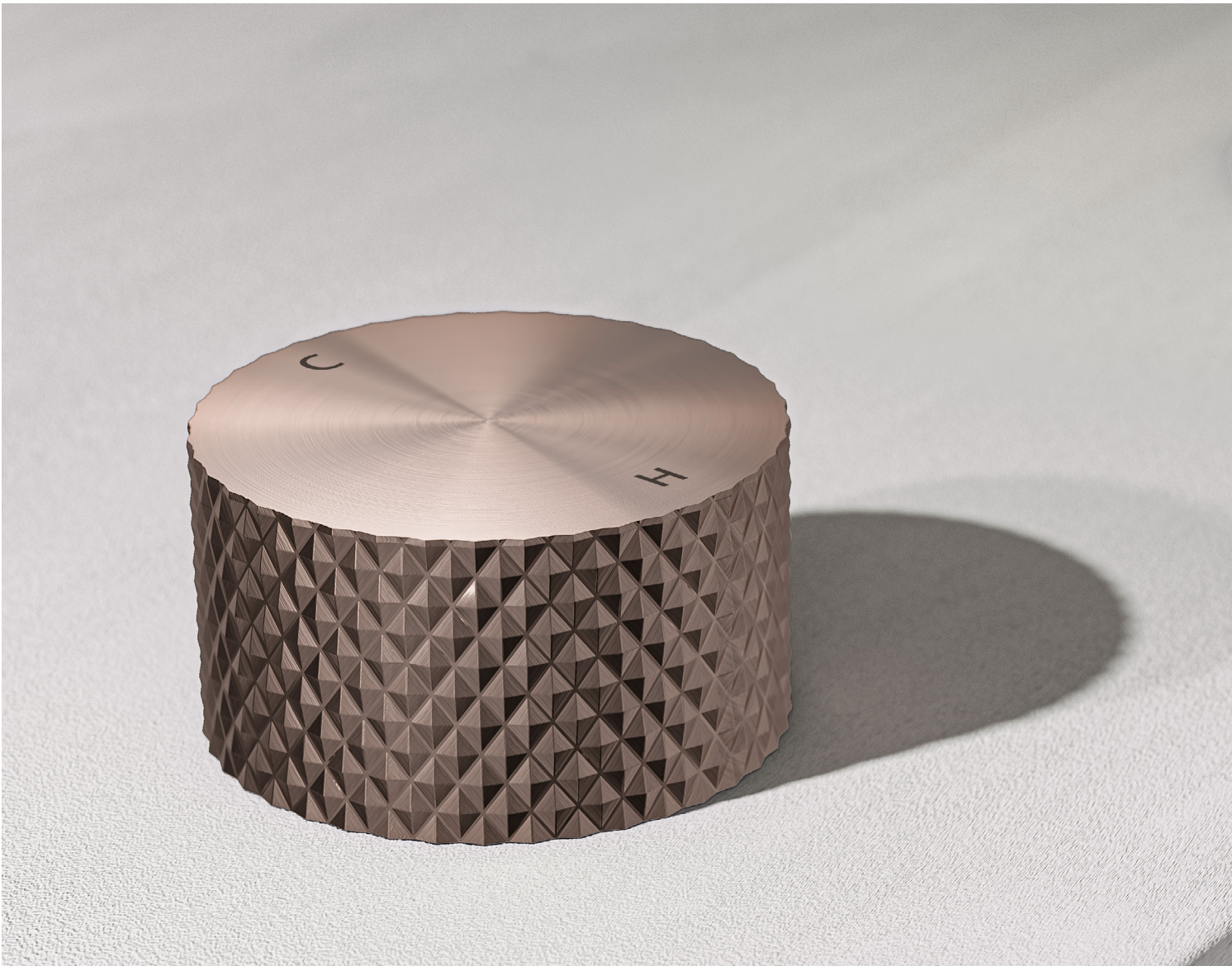
At Nero, we take tapware personally.

That's because we understand that your choices are entirely personal ones.

The taps and accessories you choose for your home are an extension of yourself. They say something about you. Your tapware is not just a source of water it's a source of pride an expression of who you are, what you think, what you feel. Every time you turn on a tap, hang a towel, or take a shower, it should be a reminder of your sense of style.

We create tapware that is aesthetically beautiful, and effortlessly functional.

And we remain proud to have Nero as part of your home, part of your life, and indeed, part of you.



Better quality finish for purer experience

Design of progressive products incorporates the designer's profound awareness of minimalism art and advanced aesthetics. He makes the main body lines of the products purer and simpler, and at the same time, we take more consideration on the details. Take the opal progressive range as example, the product finishing integrates highly faceted surface, which is not just an aesthetic consideration but more about the practicality of the switch, so that, you no longer have to worry about fingerprints and as even with frequent use you can still maintain the artistic feeling of the products.



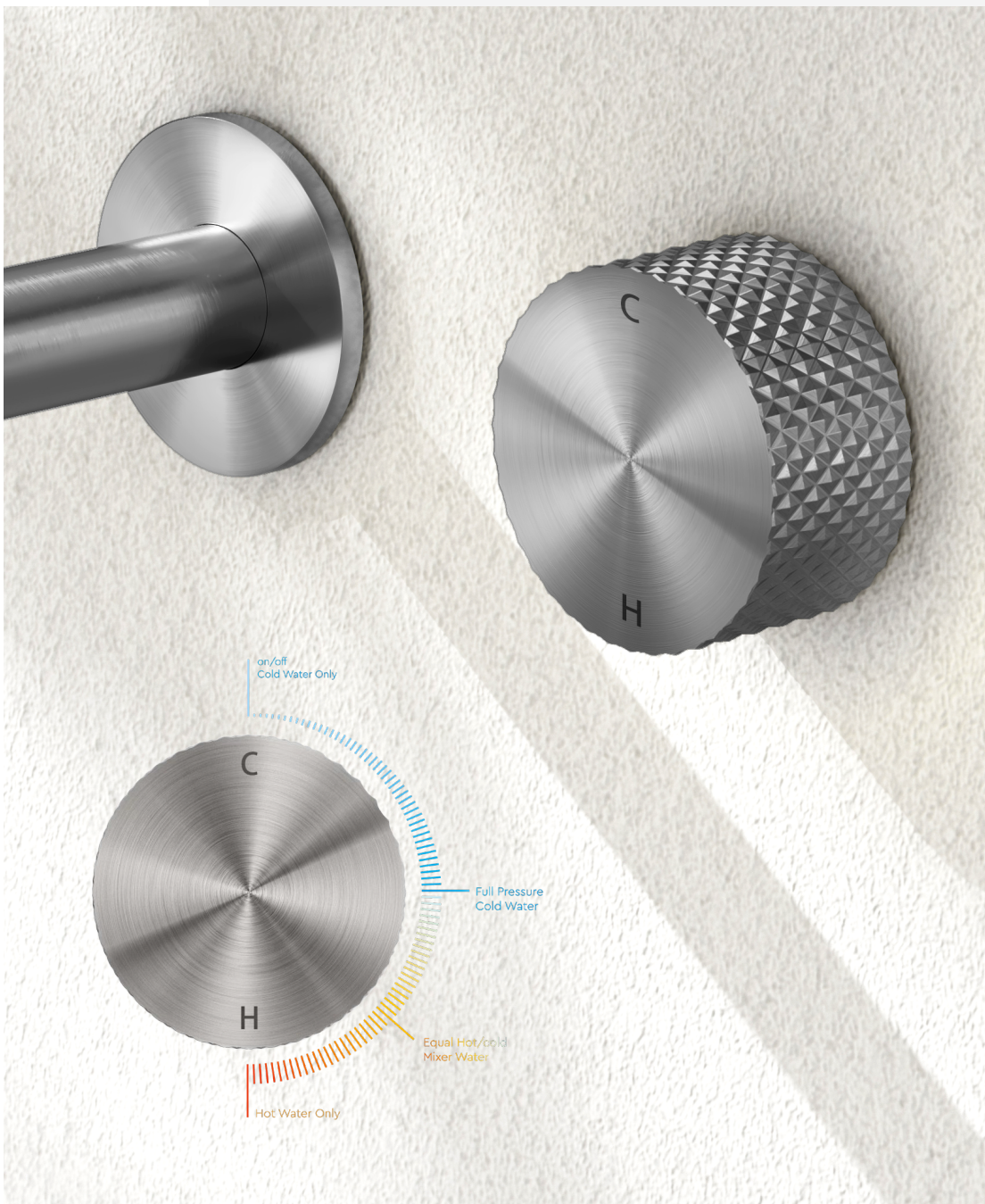
Separatable product design for more flexible switch installation position

The outlet pipe and mixer adapt separatable design, so that you are free to decide the position of mixer according to the different need of space.

This makes the use and installation of the faucet more casual and more stylish.

Just one rotary switch for control of temperature and flow

The progressive dial product can fully control both water temperature and flow by simply rotating.

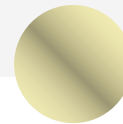




Brushed Nickel



Graphite



Brushed Gold



Brushed Bronze

Multi-color options for matching with your living space at will

Our Progressive Range has a wide selection of choices, and we take different artistic effects into account. Here we provide two range: opal progressive and kara progressive for you. You can choose the right color and finish pattern according to your requirements and space. The light luxurious feeling of progressive range products will definitely spice up a different visual aesthetic to your living space.

Opal Progressive

Minimalist, yet eye catching, our Opal Progressive range effortlessly takes centre stage without drawing attention to itself. Like most true stars, these taps, mixers, showers and accessories don't have to try too hard to impress. They come in an ultra-modern range of finishes which feature brushed gold, brushed nickel, brushed bronze and graphite.

But it's not just how the Progressive range looks that makes it such a stand out. It's how it works. The mixer handle works through three separate zones – cold water only, a mix of hot and cold and hot water only – for more efficient water usage.

You can see and feel the quality of the moment you come into contact with them. The tactile finish on the handles, for example is the perfect combination of visual appeal and welcome practicality. We have carefully considered not just the aesthetic appeal, but the everyday ease of use.







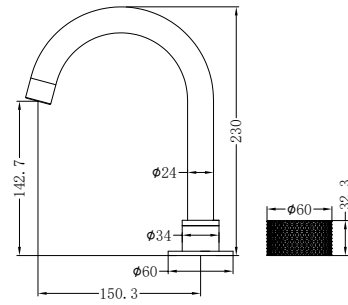
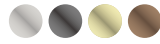
Brushed Nickel



NR252001BN

Basin Set

Wels Rating: 6 Star, 4.5L/Min



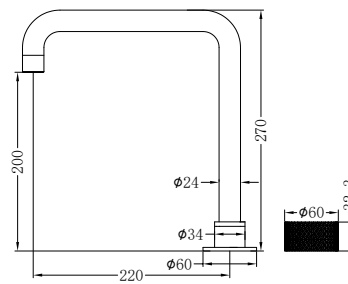
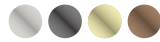
Brushed Nickel



NR252001aBN

Tall Basin Set

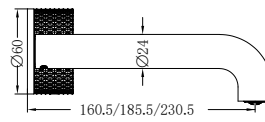
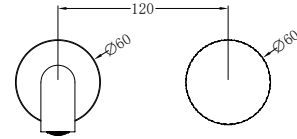
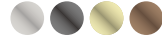
Wels Rating: 5 Star, 6L/Min





NR252007a160BN / NR252007a185BN / NR252007a230BN

Wall Basin Set 160mm/185mm/230mm Spout
 Wels Rating: 5 Star, 6L/Min

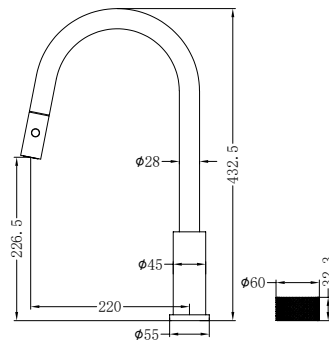
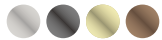


Brushed Nickel



NR252008BN

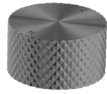
Pull Out Kitchen Set
 Wels Rating: 5 Star, 5L/Min



Brushed Nickel



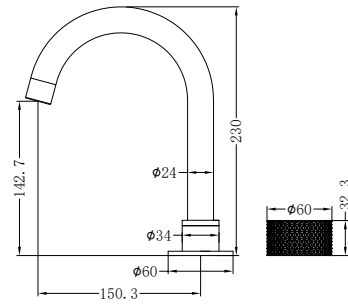
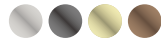
Graphite



NR252001GR

Basin Set

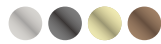
Wels Rating: 6 Star, 4.5L/Min



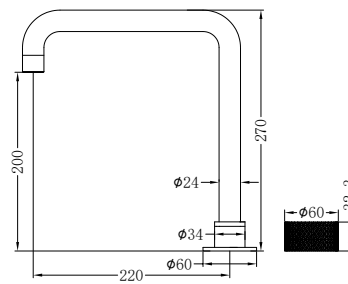
NR252001aGR

Tall Basin Set

Wels Rating: 5 Star, 6L/Min



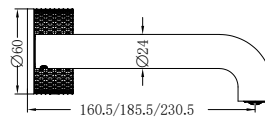
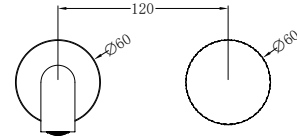
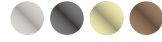
Graphite





NR252007a160GR / NR252007a185GR / NR252007a230GR

Wall Basin Set 160mm/185mm/230mm Spout
 Wels Rating: 5 Star, 6L/Min

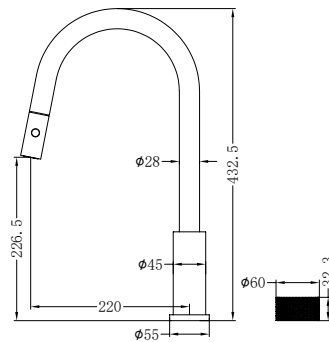
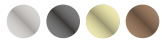


Graphite



NR252008GR

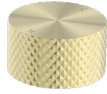
Pull Out Kitchen Set
 Wels Rating: 5 Star, 5L/Min



Graphite



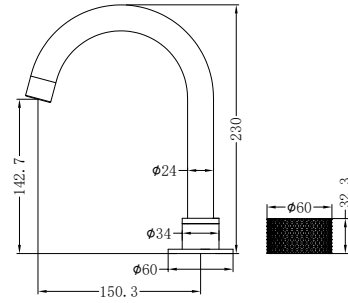
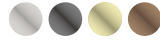
Brushed Gold



NR252001BG

Basin Set

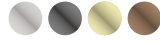
Wels Rating: 6 Star, 4.5L/Min



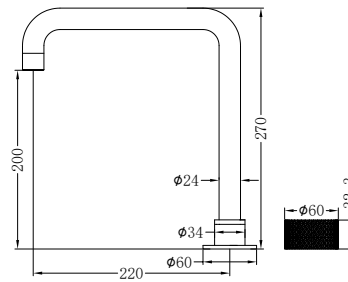
NR252001aBG

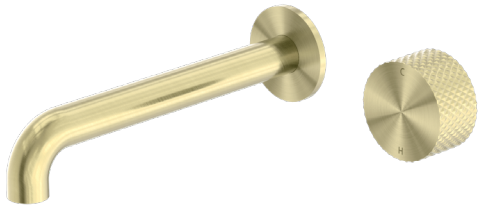
Tall Basin Set

Wels Rating: 5 Star, 6L/Min



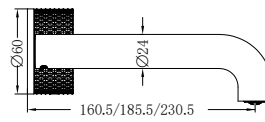
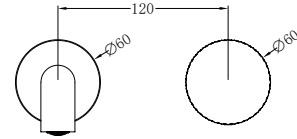
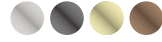
Brushed Gold





NR252007a160BG / NR252007a185BG / NR252007a230BG

Wall Basin Set 160mm/185mm/230mm Spout
 Wels Rating: 5 Star, 6L/Min

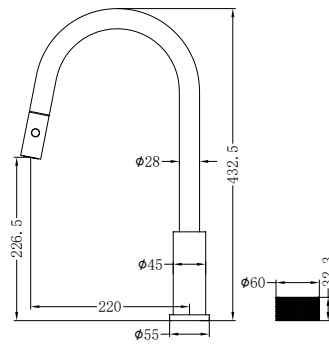
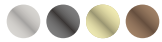


Brushed Gold



NR252008BG

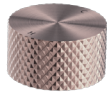
Pull Out Kitchen Set
 Wels Rating: 5 Star, 5L/Min



Brushed Gold



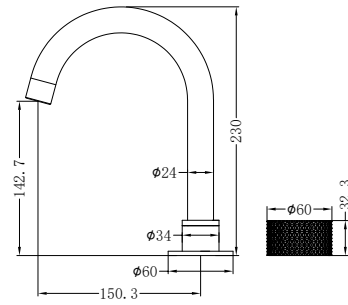
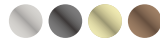
Brushed Bronze



NR252001BZ

Basin Set

Wels Rating: 6 Star, 4.5L/Min



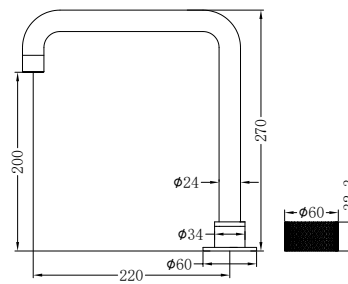
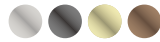
Brushed Bronze



NR252001aBZ

Tall Basin Set

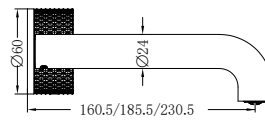
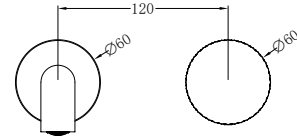
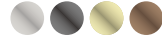
Wels Rating: 5 Star, 6L/Min





NR252007a160BZ / NR252007a185BZ / NR252007a230BZ

Wall Basin Set 160mm/185mm/230mm Spout
 Wels Rating: 5 Star, 6L/Min

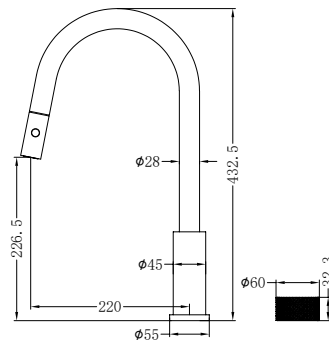
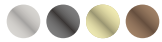


Brushed Bronze

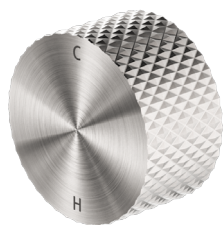


NR252008BZ

Pull Out Kitchen Set
 Wels Rating: 5 Star, 5L/Min



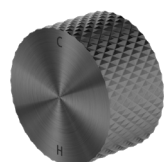
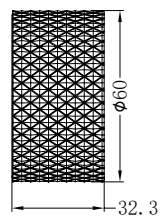
Brushed Bronze



Brushed Nickel

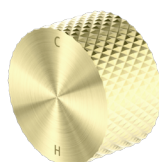
NR252009BN

Shower Mixer



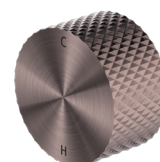
NR252009GR

Graphite



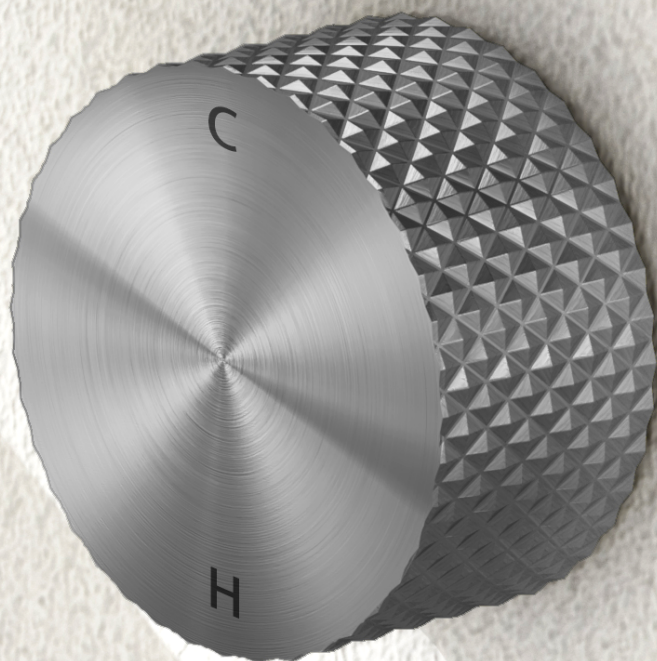
NR252009BG

Brushed Gold



NR252009BZ

Brushed Bronze



Kara Progressive

This modern range of taps, mixers and showers is a real show stopper and will add a touch of style and class to any kitchen or bathroom. It has been designed and manufactured with quality and confidence in mind.

Sleek and stylish curves are the inspiration behind this contemporary range which comes in a stunning brushed gold finish as well as chrome, brushed nickel, gunmetal and matte black. And it will turn any kitchen or bathroom into the feature rooms of the home. But it's not just the unique look of the Progressive range that makes it so unique. It's the way it functions. The mixer dial works through three separate zones – cold water only, a mix of hot and cold and hot water only – for more efficient water usage.





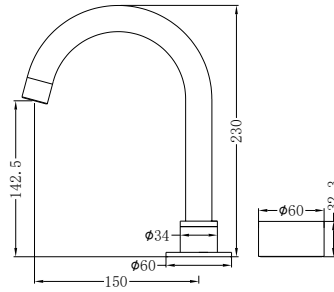


Chrome



NR271901CH

Basin Set
Wels Rating: 6 Star, 4.5L/Min

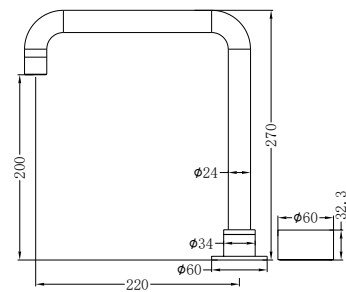


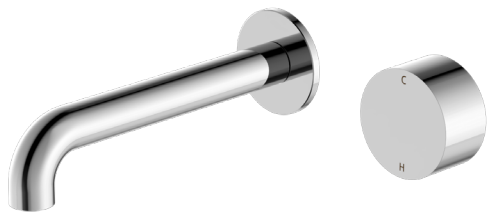
Chrome



NR271901aCH

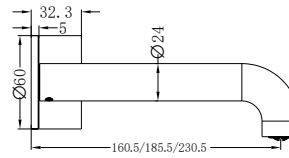
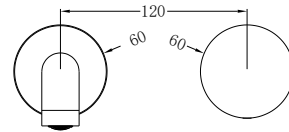
Tall Basin Set
Wels Rating: 5 Star, 6L/Min





NR271907a160CH / NR271907a185CH / NR271907a230CH

Wall Basin Set 160mm/185mm/230mm Spout
 Wels Rating: 5 Star, 6L/Min

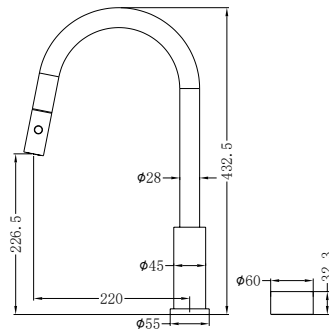


Chrome



NR271908CH

Pull Out Kitchen Set
 Wels Rating: 5 Star, 5L/Min



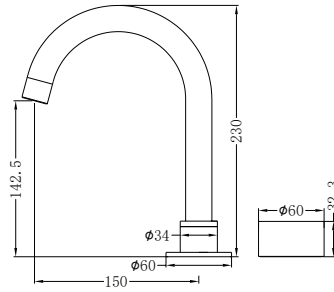
Chrome



Matte Black

NR271901MB

Basin Set
Wels Rating: 6 Star, 4.5L/Min

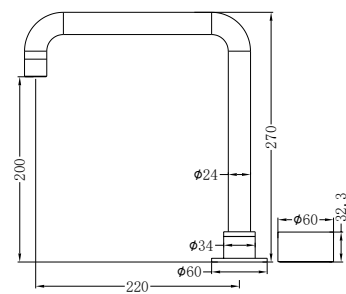


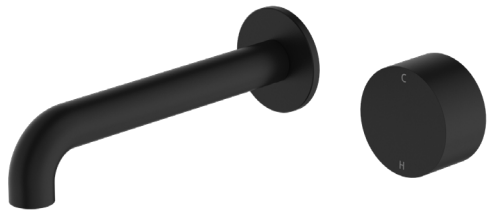
NR271901aMB

Tall Basin Set
Wels Rating: 5 Star, 6L/Min



Matte Black

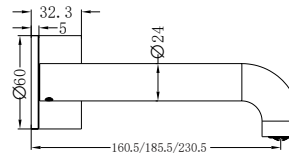
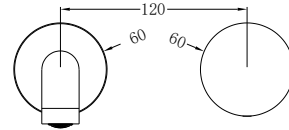




Matte Black

NR271907a160MB / NR271907a185MB / NR271907a230MB

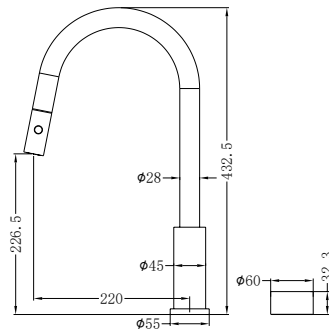
Wall Basin Set 160mm/185mm/230mm Spout
 Wels Rating: 5 Star, 6L/Min

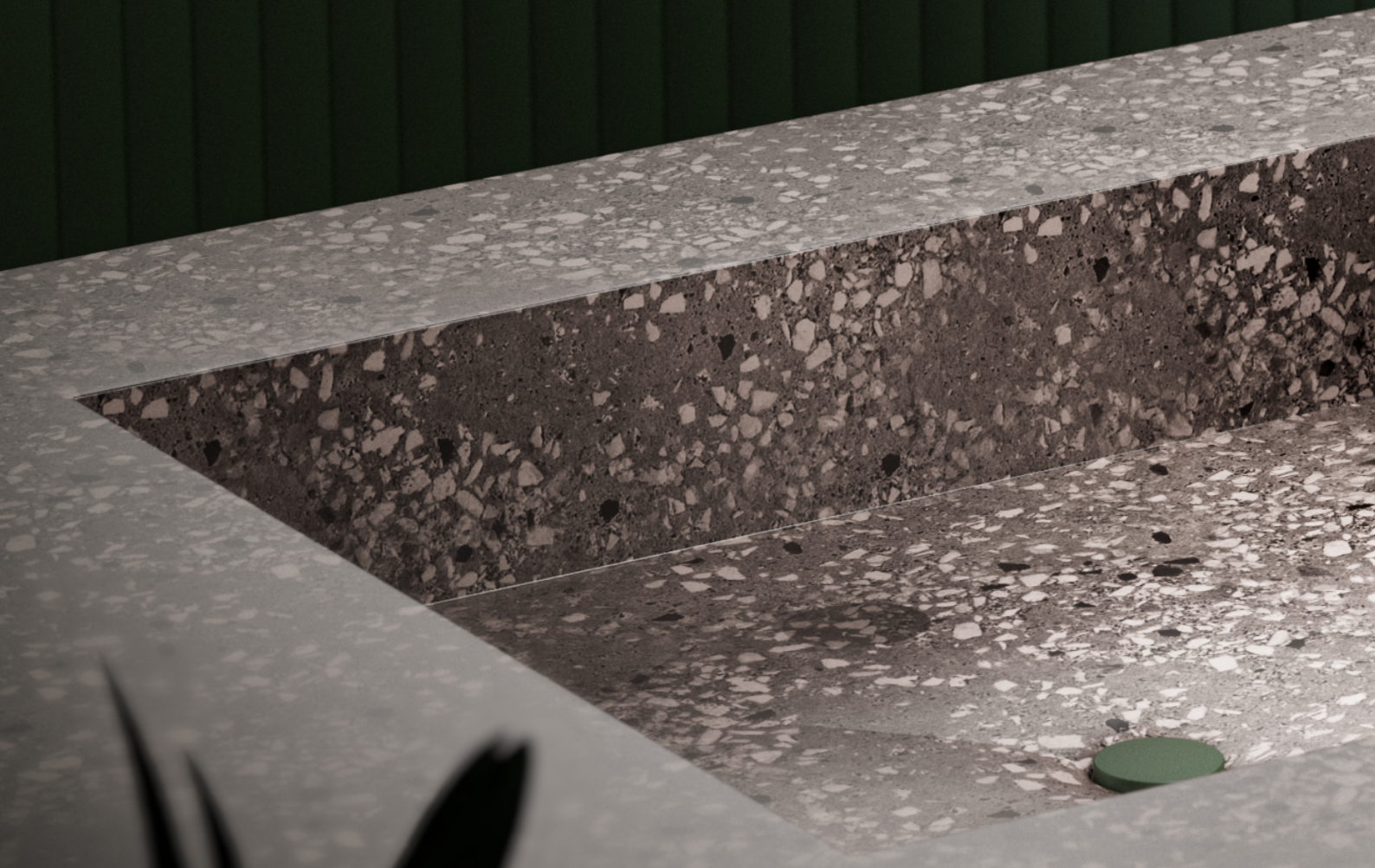
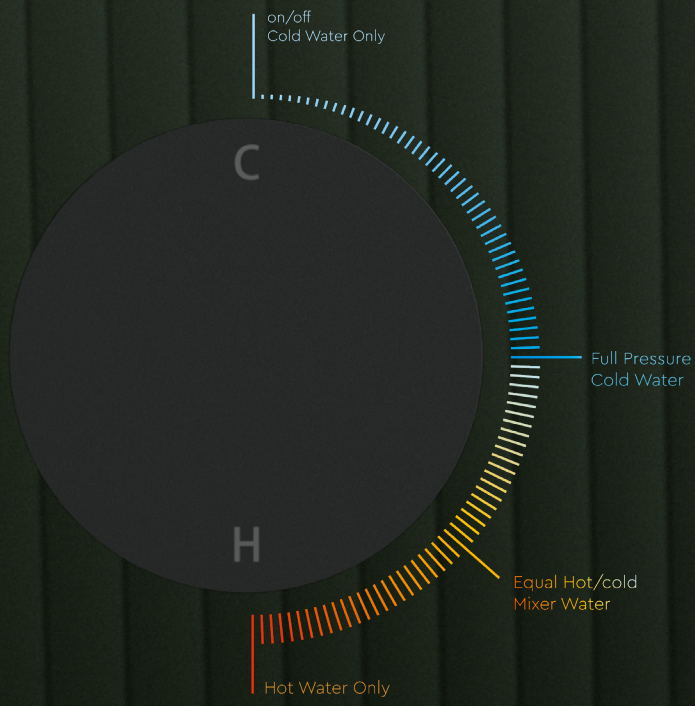


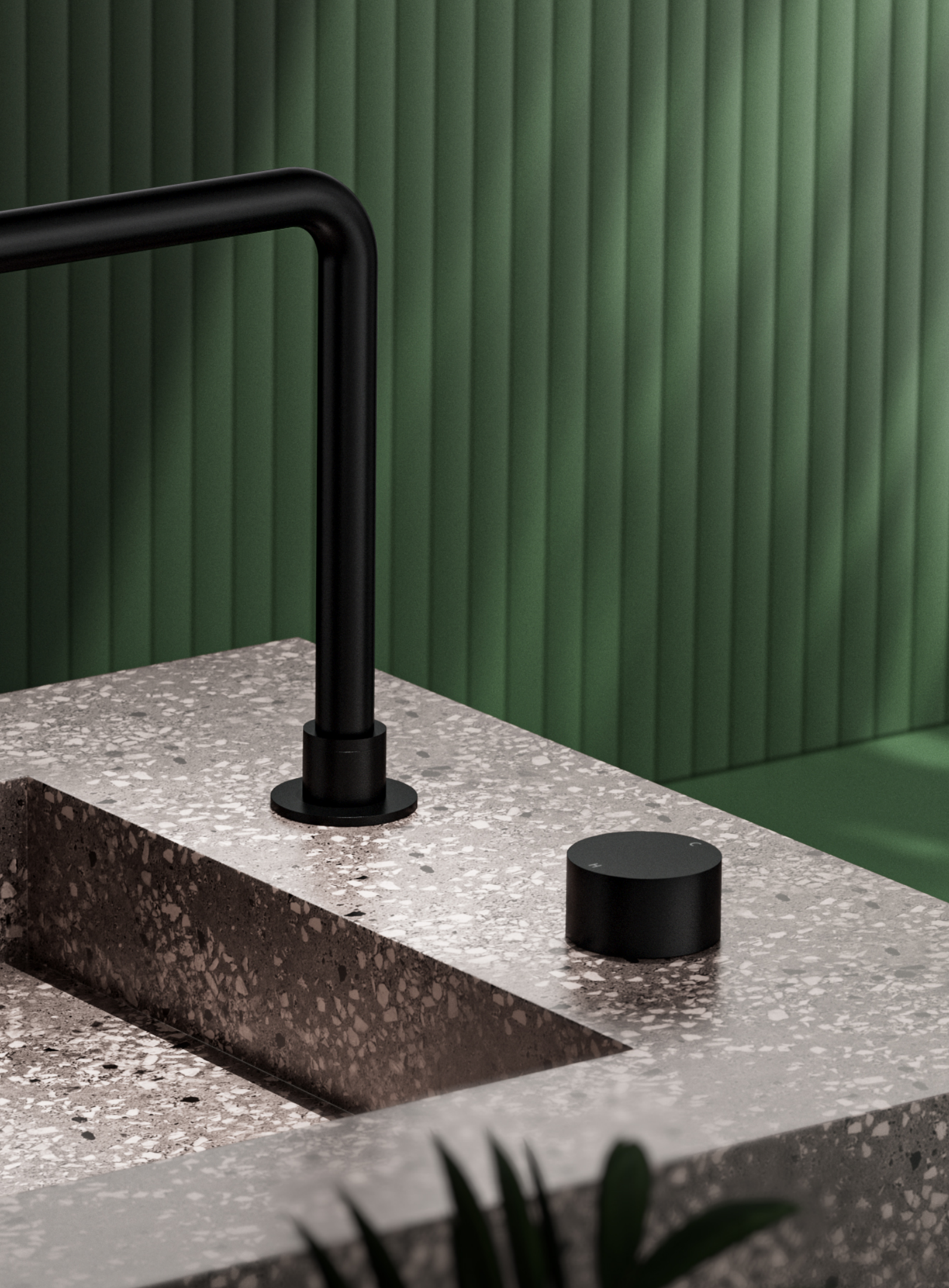
Matte Black

NR271908MB

Pull Out Kitchen Set
 Wels Rating: 5 Star, 5L/Min



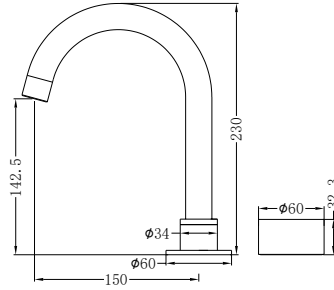






NR271901BN

Basin Set
Wels Rating: 6 Star, 4.5L/Min

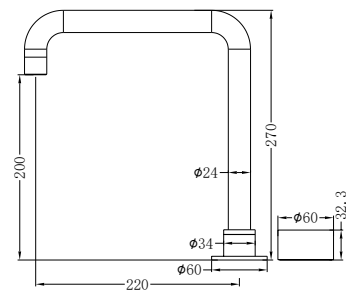


Brushed Nickel



NR271901aBN

Tall Basin Set
Wels Rating: 5 Star, 6L/Min

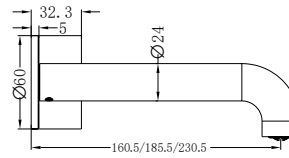
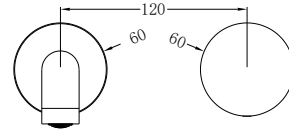


Brushed Nickel



NR271907a160BN / NR271907a185BN / NR271907a230BN

Wall Basin Set 160mm/185mm/230mm Spout
 Wels Rating: 5 Star, 6L/Min

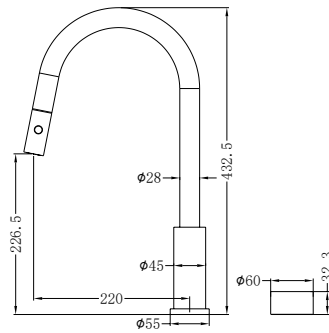


Brushed Nickel



NR271908BN

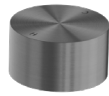
Pull Out Kitchen Set
 Wels Rating: 5 Star, 5L/Min



Brushed Nickel

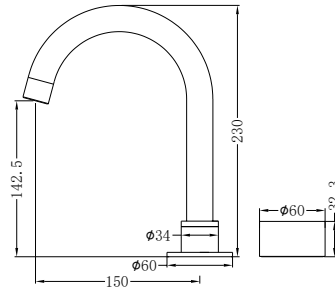


Gun Metal



NR271901GM

Basin Set
Wels Rating: 6 Star, 4.5L/Min

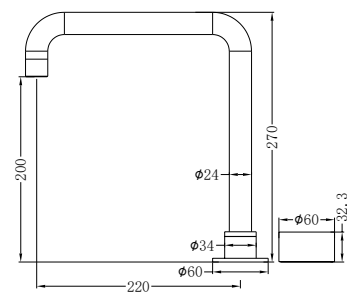


NR271901aGM

Tall Basin Set
Wels Rating: 5 Star, 6L/Min



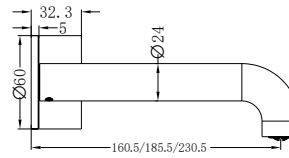
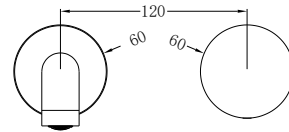
Gun Metal





NR271907a160GM / NR271907a185GM / NR271907a230GM

Wall Basin Set 160mm/185mm/230mm Spout
 Wels Rating: 5 Star, 6L/Min

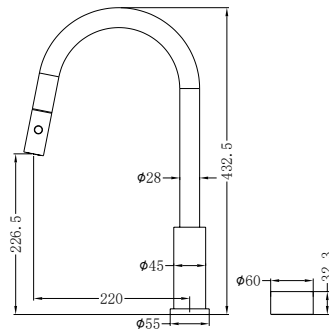


Gun Metal



NR271908GM

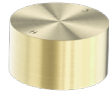
Pull Out Kitchen Set
 Wels Rating: 5 Star, 5L/Min



Gun Metal

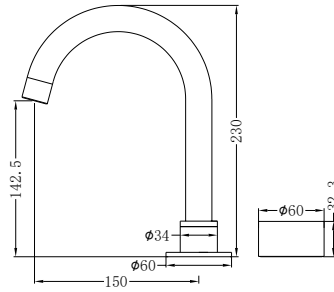


Brushed Gold



NR271901BG

Basin Set
Wels Rating: 6 Star, 4.5L/Min

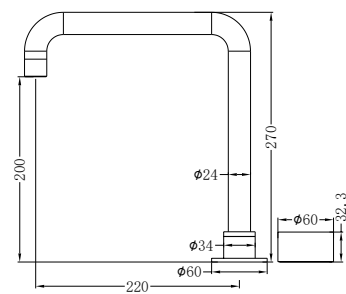


Brushed Gold



NR271901aBG

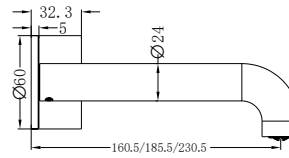
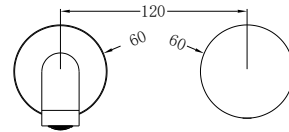
Tall Basin Set
Wels Rating: 5 Star, 6L/Min





NR271907a160BG / NR271907a185BG / NR271907a230BG

Wall Basin Set 160mm/185mm/230mm Spout
 Wels Rating: 5 Star, 6L/Min

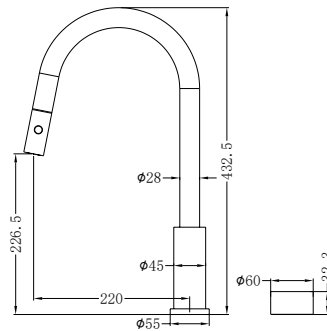


Brushed Gold

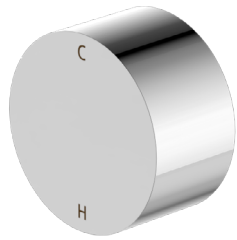


NR271908BG

Pull Out Kitchen Set
 Wels Rating: 5 Star, 5L/Min



Brushed Gold

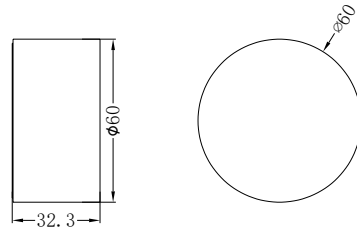


NR271909CH

Shower Mixer
Wels Rating: N/A



Chrome



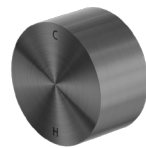
NR271909MB

Matte Black



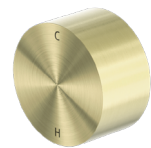
NR271909BN

Brushed Nickel



NR271909GM

Gun Metal



NR271909BG

Brushed Gold





Warranty Policy

1. Goods sold by are made to the highest industry standards and quality, which is reflected in the warranty against defects.

2. This warranty policy is issued by Nero Bathrooms International Pty Ltd t/as Nero Tapware ABN 57 148 833 989 (Supplier) of 11-13 Buontempo Road Carrum Downs, Victoria, Australia, telephone (03) 8786 3170, email warranty@nerotapware.com.au.

3. The following warranty periods apply to goods purchased after 1 December 2019:

Category	Warranty Period	Warranty Details
Pearl & Kara tapware	15 years	<ul style="list-style-type: none">15 years Replacement Cartridge only7 years Replacement products or parts on all finishes1 year Replacement products or parts & Labour
Mixer Taps	15 years	<ul style="list-style-type: none">15 years Replacement Cartridge only7 years Replacement products or parts on all finishes1 year Replacement products or parts & Labour
Showers	10 years	<ul style="list-style-type: none">10 years Replacement products or parts on chrome finishes. Note: Metal Shower hoses only have 5 years replacement warranty10 years Replacement products or parts on other finishes1 year replacement products or parts & Labour
Bath Outlets	10 years	<ul style="list-style-type: none">10 years replacement products or parts only on all finish
Bathroom Accessories	7 years	<ul style="list-style-type: none">7 year Replacement products or parts only
Other Accessories	10 years	<ul style="list-style-type: none">10 years on universal pop up waste replacementonly 1 year on bottle trap replacement only
Commercial Range & Claudia Sensor Mixer	1 year	<ul style="list-style-type: none">1 year Replacement products or parts & Labour

Nero Premium Line

Opal, Opal Progressive, Kara Progressive, York & Mecca Tapware	15 years	<ul style="list-style-type: none">15 years replacement cartridge only10 years replacement products or parts on all finishes.2 years replacement products or parts & Labour
Opal, York & Mecca Showers	15 years	<ul style="list-style-type: none">15 years replacement products or parts on all finishes.2 years replacement products or parts & Labour
Opal, York & Mecca Bathroom Accessories	10 years	<ul style="list-style-type: none">10 years replacement products or parts on all finishes.
Opal Metal Basin	15 years	<ul style="list-style-type: none">15 years replacement products on all finishes.

4.The warranty period commences from date of purchase, or for new buildings from date of handover.

5.To make a warranty claim, the customer must either contact the seller from which the customer purchased the goods, or contact the Supplier directly by telephone on (03) 8786 3170, by email at warranty@nerotapware.com.au, by fax at (03) 8786 3175 or using the online claim form at <https://nero-warranty.tradieconnect.me/admin/customer/api/warrantyform1/?service=2600&-serviceselect=2600&status=5>. The claimant must provide proof of purchase or equivalent documentation such as handover documentation for new homes.

6.The expense of claiming on the warranty will be borne by the customer claiming on the warranty.

7.This warranty covers the repair or, at Supplier's option, replacement of any goods which are defective through faulty manufacture or materials, free of charge and labour. The Supplier reserves the right to alter, or amend this warranty offer in writing at any time. The Supplier reserves the right to provide minor components (eg. Handles, aerators, buttons, dress rings, spindle/cartridges and seals) as 'Parts Only' to the customer. This warranty does not cover any claims for labour, additional products or parts associated with allegedly faulty goods for work not approved in advance in writing by the Supplier.

8.For installed goods, the Supplier requires adequate access to assess the goods, fittings and fixtures to assess any warranty claim, and to undertake any warranty repairs. The Supplier will not be responsible for any consequential damage or costs where adequate access to goods, fittings or fixtures is not provided.

9.For discontinued or unavailable goods, the Supplier may replace the goods with equivalent current or available goods, using best endeavours to match the appearance and specifications of the original goods.

10.Supplier's obligations under warranty are limited to the repair or, at Supplier's option, replacement of any products of any products which are defective through faulty workmanship or materials. To the extent permitted by law, Supplier will not be liable for any loss to furniture, floor coverings, walls, fixtures or any consequential loss of any kind caused by any defect in the product components.

11.This warranty does not cover defects caused by or arising from any of the following:

11.1.goods installed by a person other than a licenced lumber. This does not apply to bathroom accessories such as towel rails,shelves, etc;

11.2.goods not installed to relevant national standards or state regulations;

11.3.tapware exposed to water pressures and/or temperatures that exceed stated limitations as pers the standard installationinstructions. Note: AS/NZS 3500.1:2003 specifies 500kPA maximum water supply pressure at any outlet within a building for newinstallations;

11.4.fitting of other devices to the outlet of tapware (eg water filters);

11.5.fitting of in tap body or end of line water flow regulating devices that have not been approved by Supplier;

11.6.products used for incorrect applications, non-potable water, etc;

11.7.damage as a result of obstruction due to inadequate flushing of system before use;

11.8.service, repairs or other non-standard replacement parts previously undertaken without Supplier's prior written approval;

11.9.damage to finishes by adhesives, sealant, etc;

11.10.damage to finishes which arise from installation or post-installation use;

11.11.failure to observe manufacturer's care and cleaning instructions;

11.12.improper or abusive use of product and/or damage resulting from misuse, accident or neglect.

12.Should any warranty claim be made and service attended to by the Supplier or its authorised service agent, and the fault is dueto a cause expressly excluded from this warranty above, the Supplier reserves the right to charge a service fee for attending and/or any work carried out.

13.This warranty is in addition to customer's rights under the Australian Consumer Law.

14.Our goods and services come with guarantees that cannot be excluded under the Australian Consumer Law. For major failures with the service, you are entitled:

14.1.to cancel your service contract with us; and

14.2.to refund for the unused portion, or to compensation for its reduced value.You are also entitled to choose a refund or replacement for major failures with goods. If a failure with the goods or a service does not amount to a major failure, you are entitled to have the failure rectified in a reasonable time. If this is not done you are entitled to a refund for the goods and to cancel the contract for the service and obtain a refund of any unused portion. You are also entitledto be compensated for any other reasonably foreseeable loss or damage from a failure in the goods or service.

TAPWARE AND ACCESSORIES CARE AND CLEANING INSTRUCTIONS

Under no circumstances should you install tapware using acetone silicoes.

1.Never use harsh detergents or abrasive cleaners, as these will scratch the surface.

2.To clean, use a soft cloth with warm soapy water to maintain the finish in perfect condition for a lifetime of use.

3.Use of wax based furniture cream should be avoided as this can result in a build-up of deposits, which could detract from the appearance.

4.Gold and rose gold plated products should always be cleaned with care using a soft dry cloth or a soft cloth with warm soapy water.

5.Individual products may be subject to additional or specific care and cleaning instructions. Please refer to documentation accompanying those products.



Please note:

Nero Tapware reserves the right to modify specifications shown, or delete products from their range without prior notification.

Nero Bathrooms International Pty Ltd
info@nerotapware.com.au
www.nerotapware.com.au